

4000 Generation Moduler

## ATEX Modbus TCP/IP Interface Module 4x50A



### Unikke Fordele

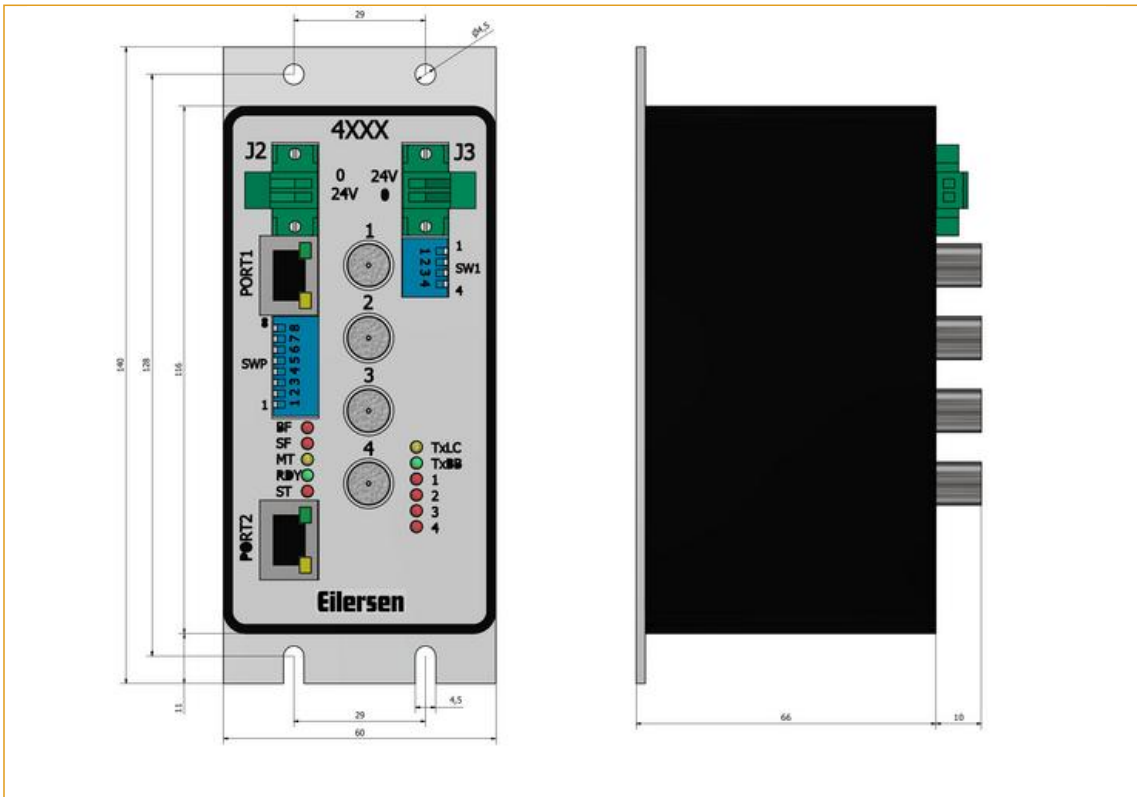
- Udviklet og produceret i Danmark
- Modbus TCP/IP Interface
- Vejemodul for op til 4 digitale vejeceller
- For ATEX / IECEx og non-ATEX applikationer
- Plug-and-play installation med Eilersen digitale vejeceller
- Avancerede digitale filtre (konfigurerbare)
- En "digital junction box", som kan monteres i nærheden af vejecellerne eller i en tavle
- Små dimensioner, enkel montage
- Opsætning via DIP-switches
- Ved ATEX / IECEx installation skal modulet forsynes af Eilersen ATEX strømforsyning type 4051A
- Bemærk at ATEX strømforsyningen type 4051A og modul type 4X50A SKAL installeres uden for det farlige område ved ATEX installationer
- Kundetilpasset applikationssoftware kan leveres efter forespørgsel

### Specifikationer

Parameter	Unit	Data
Application		4000 generation load cells and modules
EtherNet/IP Power Supply	Vdc	24Vdc +/- 10%, 1A
ATEX: Safe Power Supply		ATEX certified power supply type 4051A
Non-ATEX: Standard Power Supply	Vdc	24Vdc +/- 10%, 1A
Operating Temperature Range	°C	-20 to +50
Weight	g	500
Housing		Anodized Aluminum
Mounting		Mounting base or DIN rail



### Dimensioner (mm)



### Optioner

- Forberedt for tavlemontering på DIN-skinne
- Monteret i rustfri kasse
- Kundetilpasset applikationssoftware
- OEM version

### Dokumentation

- Vejemodul Type 4X50A Datablad PDF
- 4000 Generation ATEX Certificate SEV07 ATEX 0150 (TYSK)
- 4000 Generation ATEX Certificate SEV07 ATEX 0150 (ENGELSK)
- ATEX 4XXXA - 4051A - EKSEMPEL illustration viser vejecelleforbindelse ved RS485 serial interface for ATEX installation
- Ydre dimensioner for 4XXX vejemodul i 3D STEP format (højreklik -> "Gem link som...")
- 4000 General Drawings NON-ATEX
- 4000 General Drawings ATEX

Manual og software til download af ny software og for ændring af 4X50A Ethernet/IP modulets IP adresse

- EE Connect 160305 Version 1v0 ENG (zip fil: højreklik -> "Gem link som...")

### Modbus TCP/IP:

- Modbus TCP IP Manual MBconc4.160906.1v1 PDF (ENGLISH)

**Disclaimer and Legal Information:** The information on this web site is provided in connection with products supplied by Eilersen Electric A/S and affiliated companies ("Eilersen"). No license, expressed or implied, to any intellectual property rights is granted by this information or any documents on the web site. Eilersen assumes no liability and disclaims any expressed or implied warranty, relating to sale and/or use of Eilersen products including liability or warranties relating to fitness for a particular purpose. The information on this web site is provided as a service and for information purpose only and is subject to change without prior notice. Eilersen assumes no responsibility or liability whatsoever for any errors or inaccuracies that may appear on this web site. Eilersen is not responsible for any loss of hardware, software or files, caused by the use of the web site or elements downloaded or used from/on the web site. Hence Eilersen makes no warranty, that the web site or product or services provided on the web site (including free software downloads) will meet your requirements or will be uninterrupted, timely, secure or without errors, or that the web site or the servers used by Eilersen are free of viruses or bugs or are fully functional or accurate.