

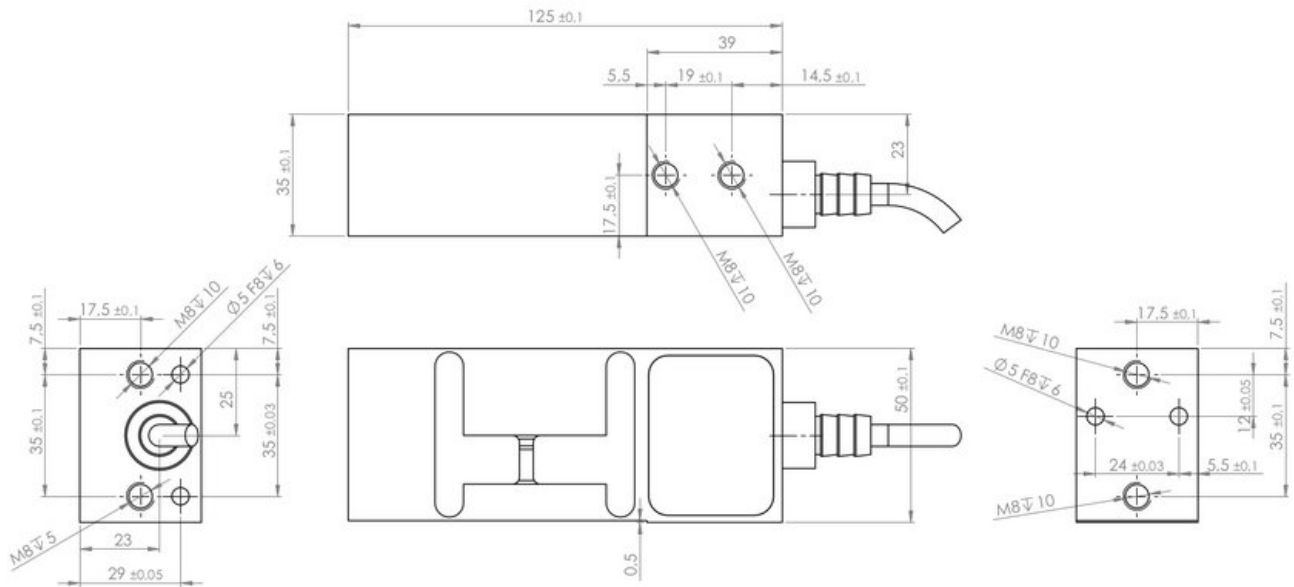
Single Point Load Cell XBL (XBL-Ex)

The robust digital single point load cell type XBL in stainless steel is hermetically sealed to IP68K. The load cell is developed for machine builders who have tasks within dynamic weighing, multihead weighers, factory automation, packaging machines, filling and dosing, flow measurement, bench and platform scales, conveyor scales, process weighing and check weighers. ATEX (Ex) and IECEx versions are available

Type:	XBL
Capacity (Emax):	3, 5, 10, 15, 20, 30, 50, 100kg
Accuracy:	Industrial 0.025% Precision 0.015% High Precision 0.010%
Overload Tolerance:	Up to 1000% of rated capacity

- Made in Denmark
- Electropolished stainless steel 1.4542 (17-4 PH)
- Laser welded with Duplex 1.4462 stainless steel
- ATEX and IECEx certified (Zone 1, 2, 21, 22)
- Robust capacitive technology
- High tolerance of up to 1000% overload
- High accuracy, High resolution
- Laser welded (IP68)
- Load cell cable replaceable
- Capacity (Emax): 3, 5, 10, 20, 30, 50, 100, 150kg
- Accuracy: Industrial 0.025% Precision 0.015% High Precision 0.010%
- Small deflection at rated capacity
- High resonance frequency (spring rate) for rapid dynamic weighing
- Easy mechanical and electrical installation
- Digital filters
- Can be used in both ATEX / IECEx and non-ATEX installations

- [XBL Datasheet](#)
- [ATEX Certificate SEV23 ATEX 0689 X \(ENG\) PDF](#)
- [IECEx Certificate SEV 23.0028 X \(ENG\) PDF](#)
- [Single Point Load Cell Type XBL Dimensions PDF](#)
- [XBL Single Point Load Cell STEP 3D CAD Fil \(click right -> "Save link as..."\)](#)
- [Guideline Correct Mounting of BNC Connector UK PDF](#)
- [VIDEO - Correct Mounting of BNC Connector \(UK\)](#)



Parameter	Unit	0.025%	0.015%
Rated capacity (E_{max})	kg	5, 10, 20, 30, 50, 100*	
Safe overload limit	% of E_{max}	300 to 1000	
Safe sideload limit	% of E_{max}	500 to 2000	
Minimum dead load	% of E_{max}	0	
Combined accuracy	% of E_{max}	0.025	0.015
Repeatability	% of E_{max}	0.012	0.010
Hysteresis	% of E_{max}	0.013	0.008
Creep 30 min.	% of E_{max}	0.015	0.012
Temperature effect on zero	% /10°C	0.050	0.035
Temperature effect on sensitivity	% /10°C	0.050	0.050
Compensated temperature range	°C	-10 to 50	
Operating temperature range	°C	-50 to 70 (100**)	
Deflection at E_{max}	mm	max 0.10	
Measuring rate	Hz	500	
Supply	Vdc	24Vdc ±5%	
Internal resolution	Bit	24	
Material		Stainless Steel 17-4PH and AISI316	
Protection		IP68	
Cable		6meter standard coaxial RG-58 (Ø6mm) with BNC connector	
Maximum cable length	m	100	
Weight	kg	1.5	
Output options		EtherNet/IP, PROFINET, EtherCAT, Profibus DP, Modbus TCP/IP, RS485, 4-20mA, 0-10Vdc	

* available in other capacities on request

** with Teflon cable

- Dynamic weighing
- Multihead weighers
- Factory Automation
- Packaging machines
- Filling and dosing
- Flow measurement
- Bench and platform scales
- Conveyor scales

- Process weighing
- Check weighers

- ATEX and IECEx (Zone 1, 2, 21, 22) version type XBL-Ex
- ATEX II 2G Ex ia IIC T6 / ATEX II 2D Ex iaD 21 T85°C
- Customized versions available
- Load cell cable length 10, 20, 50 or 100 meters
- Special PE load cell cable available for freezing low temperature (can be used down to -50 degrees Celsius)
- Special Teflon load cell cable available for very high temperature (can be used up to 100 degrees Celsius)