



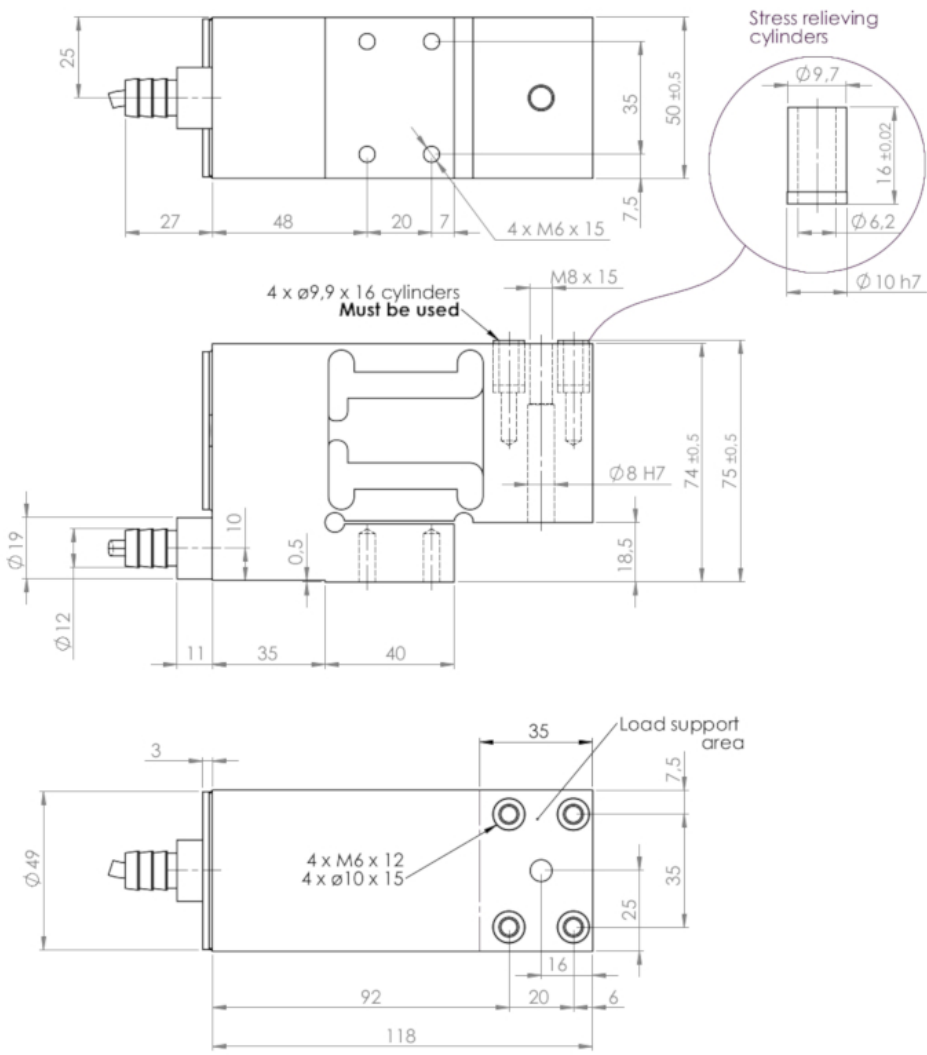
## Single Point Load Cell SPSX (SPSX-Ex)

The robust digital single point load cell type SPSX is produced in stainless steel and hermetically sealed to IP69K. The main applications are graders, multihead weighers, checkweighers, filling machines, belt scales, platform scales, bench scales etc. The SPSX load cell is OIML and NTEP approved. ATEX (Ex) and IECEx approved versions for installation in ATEX zone are also available

<b>Type:</b>	SPSX
<b>Capacity (Emax):</b>	5, 10, 20, 30, 50, 100, 150, 200kg
<b>Accuracy:</b>	Industrial 0.025% Precision 0.015% High Precision 0.010%
<b>Overload Tolerance:</b>	Up to 1000% of rated capacity

- Made in Denmark
- Electropolished stainless steel 1.4542 (17-4 PH)
- Laser welded with Duplex 1.4462 stainless steel
- ATEX and IECEx certified (Zone 1, 2, 21, 22)
- Robust capacitive technology
- High tolerance of up to 1000% overload
- High accuracy, High resolution
- Platform size up to 400 x 400mm
- Hermetically sealed to IP68
- Load cell cable replaceable
- Capacity (Emax): 5, 10, 20, 30, 50, 100, 150, 200kg
- Accuracy: Industrial 0.025% Precision 0.015% High Precision 0.010%
- Small deflection at rated capacity
- High resonance frequency (spring rate) for rapid dynamic weighing
- Easy mechanical and electrical installation
- Digital filters
- OIML and NTEP approvals

- [SPSX Datasheet](#)
- [Single Point Load Cell Type SPSX Dimensions PDF](#)
- [Single Point Load Cell Type SPSX 3D Dimensions PDF](#)
- [SPSX Single Point Load Cell STEP 3D CAD File \(right click -> "Save Link As..."\)](#)
- [Guideline Correct Mounting of BNC Connector \(UK\) PDF](#)
- [VIDEO - Correct Mounting of BNC Connector \(UK\) PDF](#)
- [ATEX Certificate SEV23 ATEX 0689 X \(ENG\) PDF](#)
- [IECEx Certificate SEV 23.0028 X \(ENG\) PDF](#)
- [NTEP certificate SPSX SPSX-Ex](#)
- [OIML certificate SPSX SPSX-Ex](#)



Parameter	Unit	0.025% C3	0.015%** C4
Rated capacity ( $E_{max}$ )	kg	5, 10, 20, 30, 50, 100, 150, 200	
Safe overload limit	% of $E_{max}$	300 to 1000	
Safe sideload limit	% of $E_{max}$	500 to 2000	
Minimum dead load	% of $E_{max}$	0	
Combined accuracy	% of $E_{max}$	0.025	0.015
Repeatability	% of $E_{max}$	0.012	0.010
Hysteresis	% of $E_{max}$	0.010	0.005
Creep 30 min.	% of $E_{max}$	0.015	0.010
Temperature effect on zero	% /10°C	0.030	0.025
Temperature effect on sensitivity	% /10°C	0.030	0.025
Compensated temperature range	°C	-10 to 50	
Operating temperature range	°C	-50 to 70 (100*)	
Deflection at $E_{max}$	mm	0.10	
Measuring rate	Hz	500	
Supply	Vdc	24Vdc ±5%	
Internal resolution	Bit	24	
Material		Stainless Steel 17-4PH and AISI316	
Protection		IP68	
Cable		6meter standard coaxial RG-58 (Ø6mm) with BNC connector	
Maximum cable length	m	100	
Weight	kg	2.5	
Output options		PROFINET, Profibus DP, EtherNet/IP, Modbus TCP/IP, EtherCAT, RS485, 4-20mA, 0-10Vdc	

\* with Teflon cable

\*\* available in higher accuracy on request

- Dynamic weighing
- Multihead weighers
- Factory Automation
- Packaging machines
- Filling and dosing
- Flow measurement
- Bench and platform scales
- Conveyor scales
- Process weighing
- Checkweighers

- ATEX and IECEx (Zone 1, 2, 21, 22) version type SP5075A
- ATEX II 2G Ex ia IIC T6 / ATEX II 2D Ex iaD 21 T85°C
- Customized versions available
- Load cell cable length 10, 20, 50 or 100meters
- Mud resistant and Halogen free cables for offshore installation
- Special PE load cell cable available for freezing low temperature (can be used down to -50 degrees Celsius)
- Special Teflon load cell cable available for very high temperature (can be used up to 100 degrees Celsius)