



## Tension Load Cell TM

The robust digital tension load cell type TM is produced in stainless steel and used for weighing suspended vessels, in cranes, lifts and for measuring forces in heavy duty equipment. ATEX versions are available

<b>Type:</b>	TM
<b>Capacity (Emax):</b>	2000, 5000, 10000kg
<b>Accuracy:</b>	Industrial 0.10%
<b>Overload Tolerance:</b>	Up to 1000% of rated capacity

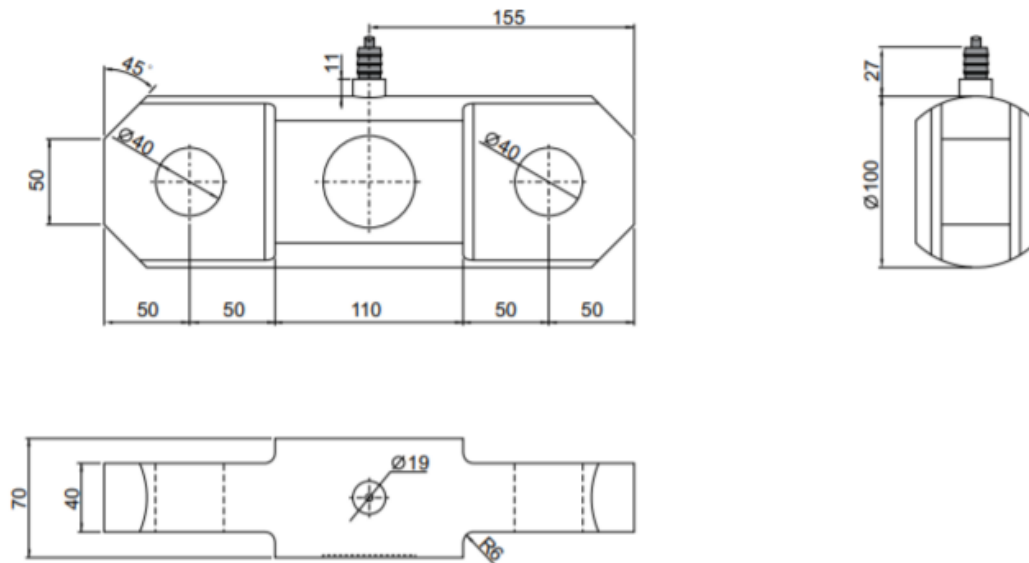
- Made in Denmark
- Robust capacitive technology
- Patented high reliability capacitive sensor
- High tolerance of up to 1000% overload
- Stainless steel 1.4542 (17-4 PH)
- Sealed to IP67
- Withstands welding voltages and ESD
- Cable length up to 100meters

- Capacity (Emax): 2000, 5000, 10000kg
- Accuracy: Industrial 0.10%
- Load cell cable replaceable
- Pre-calibrated with signal in kg or N
- Calibration independent of cable length
- Easy mechanical and electrical installation

- [Digital Load Cell Type TM Dimensioner PDF](#)
- [TM Load Cell STEP 3D CAD Fil \(Right click -> "Gem link som..."\)](#)
- [Guide Correct Mounting of BNC connector PDF](#)
- [VIDEO - Correct Mounting of BNC connector](#)

## Digital Tension Load Cell – Type TM

### Dimensions (mm)



Parameter	Unit	0.10%	0.05%
Rated capacity ( $E_{max}$ )	kg	1000, 2000, 5000, 10000	
Safe overload limit	% of $E_{max}$	300 to 1000	
Safe sideload limit	% of $E_{max}$	300 to 500	
Combined accuracy	% of $E_{max}$	0.100	0.050
Repeatability	% of $E_{max}$	0.030	0.025
Hysteresis	% of $E_{max}$	0.055	0.040
Creep 30 min.	% of $E_{max}$	0.060	0.040
Temperature effect on zero	% /10°C	0.060	0.055
Temperature effect on sensitivity	% /10°C	0.060	0.055
Compensated temperature range	°C	-10 to 50	
Operating temperature range	°C	-50 to 70 (100*)	
Deflection at $E_{max}$	mm	max 0.10	
Measuring rate	Hz	500	
Supply	Vdc	24Vdc $\pm$ 5%	
Internal resolution	Bit	24	
Material		Stainless Steel 17-4PH and AISI316	
Protection		IP68	
Cable		6meter standard coaxial RG-58 ( $\varnothing$ 6mm) with BNC connector	
Maximum cable length	m	100	
Weight	kg	10	
Output options		EtherNet/IP, PROFINET, EtherCAT, Profibus DP, Modbus TCP/IP, DeviceNet, RS485, 4-20mA, 0-10Vdc	

\* with Teflon cable

For dynamic and static measurement in:

- Under-hook crane weighing

- Force measurement
  - Cable Tension monitoring
  - Heavy duty applications
  - Crane and Hoist Load Testing and monitoring
  - Weighing suspended vessels
  - Water Weight/Bag Calibration
  - Towing and mooring load monitoring
  - Anchor line tension monitoring
  - Offshore and Marine applications
  - Crane Load Calibration
  - Subsea Vehicle Lifting
  - Onshore and Offshore wind turbine
- 
- Load cell cable length 10, 20, 50 or 100meters
  - Special PE load cell cable available for freezing low temperature (can be used down to -50 degrees Celsius)
  - Special Teflon load cell cable available for very high temperature (can be used up to 100 degrees Celsius)
  - Customized versions available