

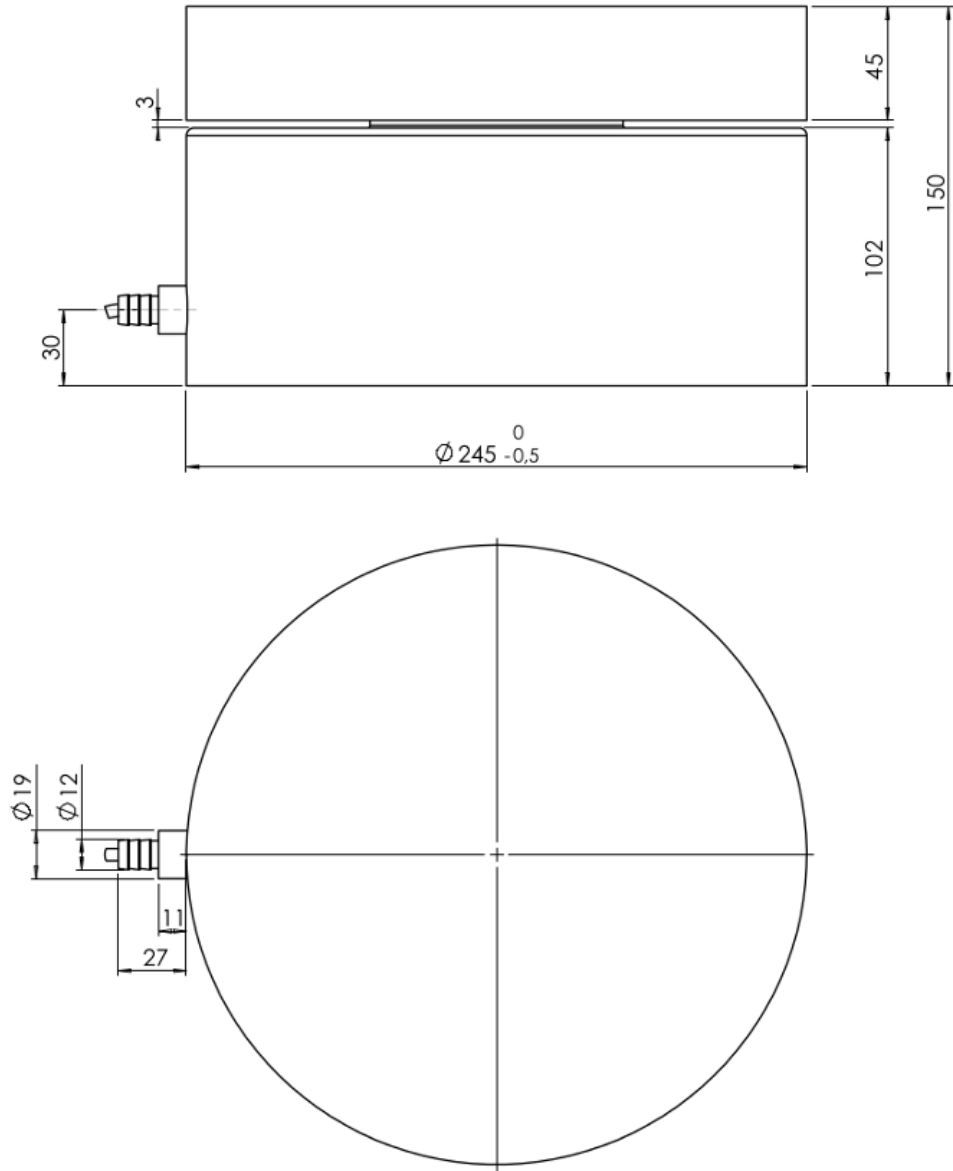
Compression Load Cell CH (CH-Ex) 100

Robust digital ATEX and IECEx certified heavy duty compression load cell produced in stainless steel and hermetically sealed to IP68 for installation under large silos, tanks, vessels and heavy duty applications. The CH-Ex load cell can be used in ATEX (Ex) IECEx and non-ATEX applications

| | |
|----------------------------|----------------------------------|
| Type: | CH100 (Non-ATEX) CH-Ex100 (ATEX) |
| Capacity (Emax): | 100tons |
| Accuracy: | Industrial 0.25% |
| Overload Tolerance: | Up to 300% of rated capacity |

- Made in Denmark
 - ATEX and IECEx certified (Zone 1, 2, 21, 22)
 - Robust capacitive technology
 - High tolerance of up to 300% overload
 - Stainless steel 1.4542 (17-4 PH)
 - Hermetically sealed to IP68
 - Laser welded with Duplex 1.4462 stainless steel
 - Can be supplied with Mud resistant and Halogen free cables for offshore installation
 - Withstands welding voltages and ESD
-
- Capacity (Emax): 100tons
 - Accuracy: Industrial 0.25%
 - Cable length up to 100meters
 - Load cell cable replaceable
 - Pre-calibrated with signal in kg or kN
 - Calibration independent of cable length
 - Easy mechanical and electrical installation
 - Can be used in both ATEX / IECEx and non-ATEX installations

- [CH CH-Ex Compression Load Cell Dimensions PDF](#)
- [ATEX Certificate SEV14 ATEX 0171 X \(GERMAN\) PDF](#)
- [ATEX Certificate SEV14 ATEX 0171 X \(ENGLISH\) PDF](#)
- [CH \(CH-Ex\) 100 Compression Load Cell STEP 3D CAD File \(right click -> "Save Link As..."\)](#)
- [Heavy duty lift-off protection for 100ton compression load cell PDF](#)
- [Guideline Correct Mounting of BNC Connector \(UK\) PDF](#)
- [VIDEO - Correct Mounting of BNC Connector](#)



| Parameter | Unit | 0.25% |
|-----------------------------------|----------------|---|
| Rated capacity (E_{max}) | ton | 100 |
| Safe overload limit | % of E_{max} | 300 |
| Safe sideload limit | % of E_{max} | 200 |
| Combined accuracy | % of E_{max} | 0.250 |
| Repeatability | % of E_{max} | 0.080 |
| Hysteresis | % of E_{max} | 0.080 |
| Creep 30 min. | % of E_{max} | 0.080 |
| Temperature effect on zero | % /10°C | 0.100 |
| Temperature effect on sensitivity | % /10°C | 0.100 |
| Compensated temperature range | °C | -10 to 50 |
| Operating temperature range | °C | -50 to 70 (100*) |
| Deflection at E_{max} | mm | 0.10 |
| Measuring rate | Hz | 500 |
| Supply | Vdc | 24Vdc \pm 5% |
| Internal resolution | Bit | 24 |
| Material | | Stainless Steel 17-4PH and AISI316 |
| Protection | | IP68 |
| Cable | | 6meter standard coaxial RG-58 (\varnothing 6mm) with BNC connector |
| Maximum cable length | m | 100 |
| Weight | kg | 65 |

Output options

EtherNet/IP, PROFINET, EtherCAT, Profibus DP, Modbus TCP/IP, DeviceNet, RS485, 4-20mA, 0-10Vdc

* with Teflon cable

- Silo weighing
- Process weighing
- Heavy duty applications
- Level measurement
- Offshore applications

- ATEX and IECEx (Zone 1, 2, 21, 22) version type CH-Ex
- ATEX II 2G Ex ia IIC T6 Gb / ATEX II 2D Ex ia IIIC T85°C Db
- Load cell cable length 10, 20, 50 or 100meters
- Mud resistant and Halogen free cables for offshore installation
- Special PE load cell cable available for freezing low temperature (can be used down to -50 degrees Celsius)
- Special Teflon load cell cable available for very high temperature (can be used up to 100 degrees Celsius)